



Since 1980, **Zeefax** has built a reputation on its ability to provide reliable and excellent engineering services to the Power and Process sectors worldwide, and today has the technical expertise and capability to specify, engineer, manufacture and deliver a wide range of turbine supervisory and condition monitoring products and systems.

IMPView® software for IMPs and SNet

IMPView® for Windows™ is a configuration, data acquisition, and data transfer tool designed for use with the 35954U SNet-to-USB interface module. The 35954U module itself is designed to allow users of modern processor technology fitted with a standard USB port, including Laptops, to interface to the well established and much respected Solartron SNet / IMP data acquisition network.

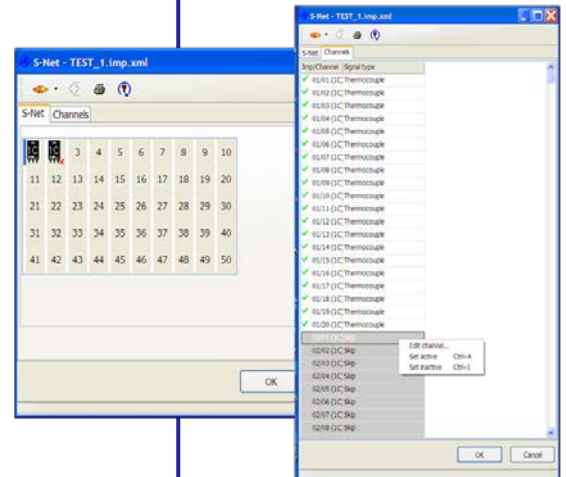
When combined, these two products form the basis of a modern data acquisition and analysis system, which can interface to and exchange plant data with the latest external data loggers, historians and MMI display systems and software, using industry standard protocols - including OPC and MODBUS.

IMPView® features and functions

IMPView® includes a full configuration editor, allowing the whole SNet to be defined, reviewed and tested, and includes the auto-detect function to simplify IMP identification and placement.

An important feature of the new IMPView® is the ability to connect to multiple SNet networks concurrently, each using a separate 35954U, thereby providing a conduit for consolidation and combination of acquired data from multiple existing - or new - SNet networks.

When operating, IMPView® acts as an OPC or MODBUS server, providing data to external devices in a series of standard formats including 16 and 32 bit rounded values, as well as the IEEE4 32 bit floating point format.



35954U – SNet-to-USB Interface

The 35954U interface is operable with any host computer fitted with a USB compatible interface, allowing communication with up to 50 IMPs via the S-Net cable. It is supplied with IMPView® which provides IMP programming and testing tools, and a range of industry standard data sharing capabilities.



The 35954U provides all the hardware, timing control, error checking and data protocol necessary for reliable communication between the host computer and the S-Net network.

The 35954U can breath new life into any established IMP network, allowing continued use and confidence in the system.